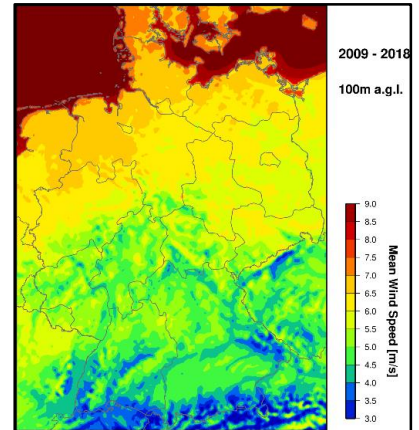




New wind atlas

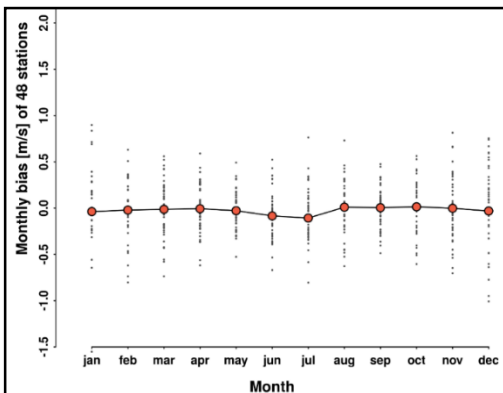
anemos wind atlas Germany 3km ERA-5

- ✓ Accredited method
- ✓ 20 years & updated monthly
- ✓ Based on state-of-the-art WRF modelling
- ✓ Validated with more than 100 measurements
- ✓ Easily accessible via: awis.anemos.de



Advantages compared to other time series

- ✓ Annual cycle correction
- ✓ High resolution up to 25m or site specific
- ✓ Transparent calculation and verification method
- ✓ Remodelling approach (low bias due to adjustment to measurements)
- ✓ 10-min resolution (wind speed & direction, air density & temperature, etc.)



Key statistics (1h)

	D-3km.ERA5	80 m height	140 m height
R ² [%]:		73.9 ± 6.7	76.5 ± 5.1
Bias [m/s]:		0.01 ± 0.26	0.01 ± 0.21